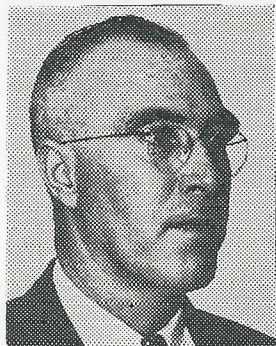


C. Brewer Subsidiary Leaders Here

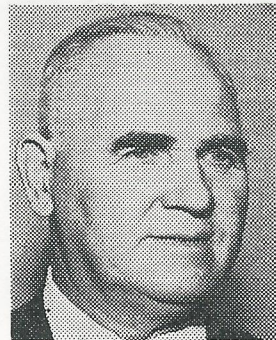


Boyd MacNaughton, president of C. Brewer and Company, pictured here in the company's Board Room in the Honolulu office. Born in Portland, Oregon, he came to the Islands in the 1930's and was with Castle & Cooke, Inc. and Hawaiian Pineapple Company prior to joining Brewer as executive vice president. In 1958 he was president of the Hawaiian Sugar Planters' Association.



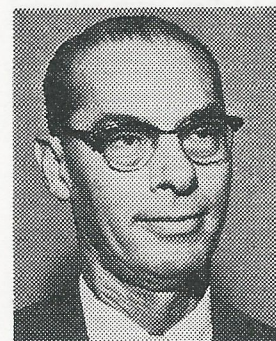
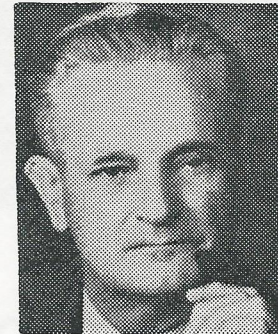
Alexander T. Hossack, Manager of Hakalau Plantation Co., was born in Scotland and began work in the island sugar industry as a timekeeper at Hutchinson Plantation in 1926. He was named manager of Hakalau in 1952. Located right at the water's edge of the Hamakua Coast, Hakalau's mill was destroyed by the disastrous 1946 tidal wave. Close to 7,300 acres of Hakalau cane land produce slightly more than 30,000 tons of raw sugar each year.

From office boy to manager is the success story of A. Douglas Ednie, manager of Pepeekeo Sugar Co. Born in Scotland, Ednie started as office boy at Honomu Plantation Co. in 1920. Nineteen years later he became manager at Honomu. In 1941 he was named manager at Pepeekeo. Pepeekeo's 6,300 plus acres produce an average of about 30,000 tons of raw sugar each year. The plantation was founded in 1860 and incorporated in 1889.



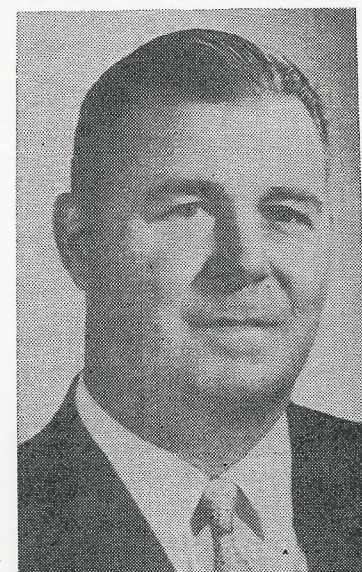
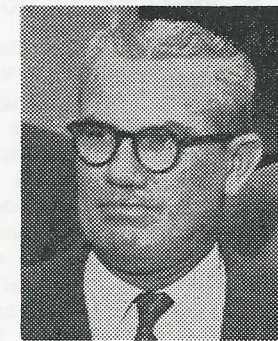
More than 30,000 tons of raw sugar are produced annually from almost 7,000 acres at Onomea Sugar Co. Historically, Onomea was the first plantation in Hawaii to utilize commercial bone meal fertilizer back in 1897. J. N. Campbell, Onomea's manager, was born at Perth, Scotland. He started in the sugar industry at Paauhau in 1920 as a luna and worked up to manager in 1946. Ten years later he was named manager at Onomea.

Hutchinson Sugar Co., located at the southernmost end of the new state, is managed by James Beatty, born in Rochester, Minn. is dean of all C. Brewer & Co. plantation managers. Starting in the industry as an overseer for Laupahoehoe Sugar Co. in 1917, Beatty was named Hutchinson manager in 1937. From its 5,500-plus acres of cane land, Hutchinson produces an average of about 20,000 tons of raw sugar each year. Often identified as "Hutch" or "Naalehu," after its principal community, this plantation dates back to 1868.

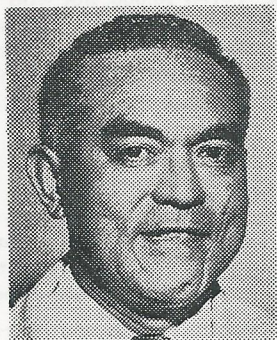


Boasting world record yields for unirrigated sugar cane and cane planted higher above sea level—3,300 feet—than anywhere else in the 50th State, Hawaiian Agricultural Co. was founded in 1876. Approximately 9,400 acres of cane land at Hawaiian Ag produce approximately 36,000 tons a year. Paul R. Tate is manager at Hawaiian Ag. Born at Barney, Iowa, he entered the sugar industry as a timekeeper at Hutchinson Sugar in 1926 and became Hawaiian Ag manager in 1956.

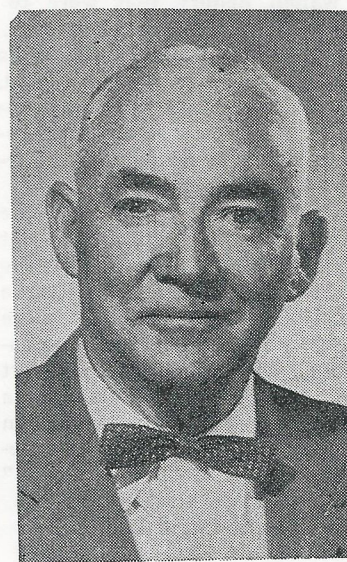
Located adjacent to the 50th state's second largest City, Hilo Sugar Co. was chartered in 1884 as a result of a merger of two older plantations. Hilo Sugar produces approximately 31,000 tons of sugar annually from slightly less than 6,700 acres. Manager Martin J. Black was born at Kukuihaele, Hawaii, and started in the sugar industry with the HSPA Experiment Station in 1929. During the course of his career he has managed five plantations, coming to Hilo Sugar in 1958.



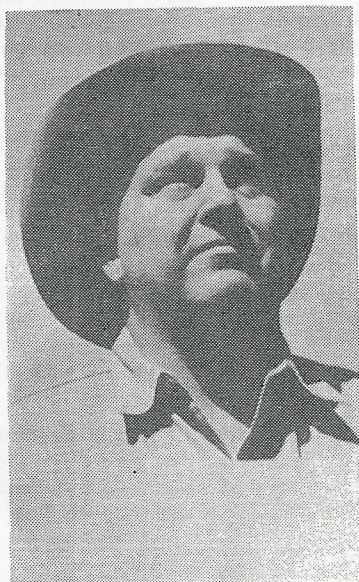
Brewer's branch office in Hilo handles machine accounting for all subsidiaries. Opened in 1953, the office has grown to its present 84 employees. Manager of the Brewer-Hilo branch office, Wayne Richardson Jr., born in California, was raised on Maui. He has been with Brewer and its subsidiaries since 1938.



Five thousand acres of Hamakua Coast land produce around 20,000 tons a year at Paauhau Sugar Co. Founded in 1878 and incorporated just before the turn of the century, Paauhau is managed by Herbert Gomez. Gomez was born at Wainiha, Kauai, and started in the sugar industry as a cut cane luna at Hawaiian Sugar Co. He was named manager at Paauhau in 1956.



HT&T, port and passenger agent for Matson Navigation Company, is located at Kuhio Wharf in the City of Hilo. President Stafford L. Austin, who has been with the Company since January 1, 1952, has been with the Brewer Organization from April 3, 1920.



In 1958 Hawaiian Ranch Company was formed to centralize management of the newly acquired Keauhou Ranch and the ranch and dairy divisions of Hawaiian Agricultural Company, Hutchinson Sugar Company and Wailuku Sugar Company. Fred Shattauer, formerly with Hutchinson, was named manager of the new company at that time.